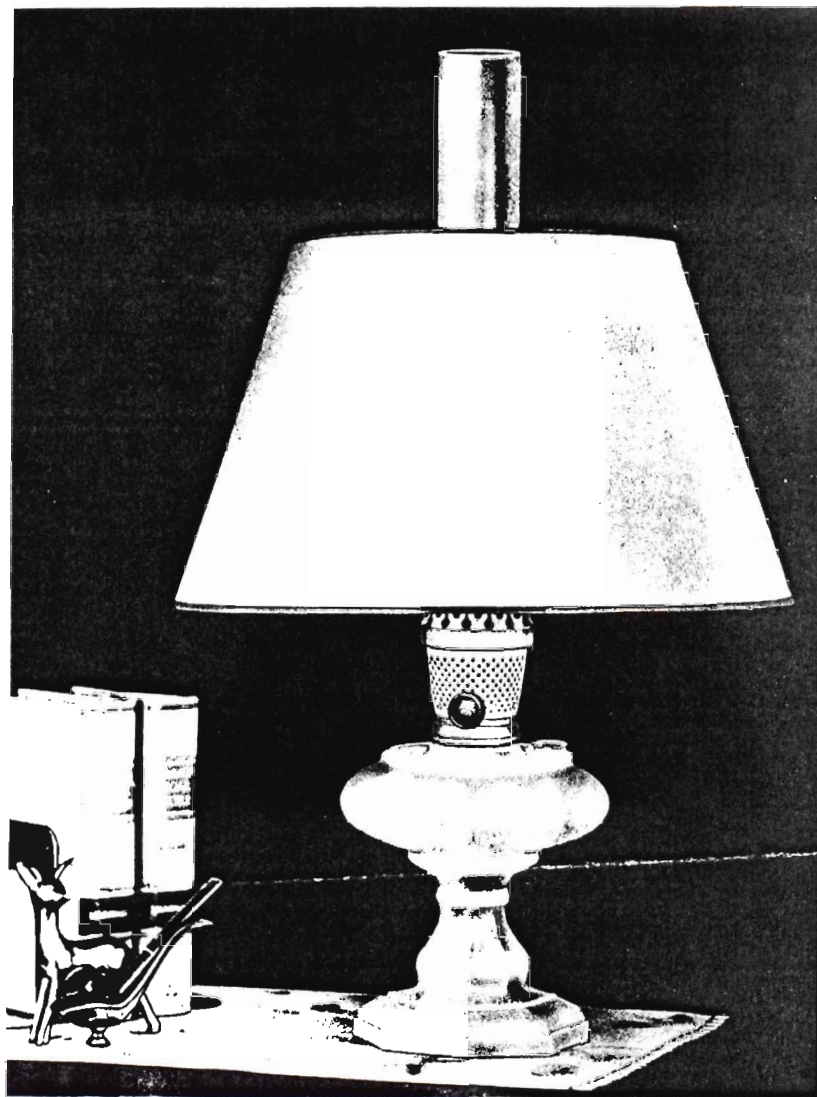


How To
OPERATE
AND
ASSEMBLE



Kerosene

**MANTLE
LAMP**



MANERA DE MONTAR Y MANEJAR
LA LAMPARA DE KEROSENE SUN FLAME NO. 300

COMO SE MONTA E OPERA A LAMPADA A PETROLEO,
MARCA "SUN LAMP" No. 300 DE CAMISA DE INCANDESCENCIA

MARCHE À SUIVRE POUR LE MONTAGE ET LE MANIEMENT DE LA
LAMPE À KÉROSINE SUN FLAME No. 300 À MANCHON
À INCANDESCENCE

SF. APPLIANCES LIMITED RIDGEFIELD, NEW JERSEY, U.S.A.

TO ASSEMBLE BURNER

(See illustration No. 1)

Remove the burner from its carton, being careful not to damage the charred edge of the wick.

The burner can now be screwed into the fount or oil container. Make sure burner is setting straight before screwing tightly into the fount so that the threads will not be crossed and damaged.

TO FILL THE LAMP

Fill lamp fount with fresh clean kerosene (paraffin). The first time the fount is filled allow the wick to soak for at least two hours before lighting.

For best results keep lamp well filled with fuel.

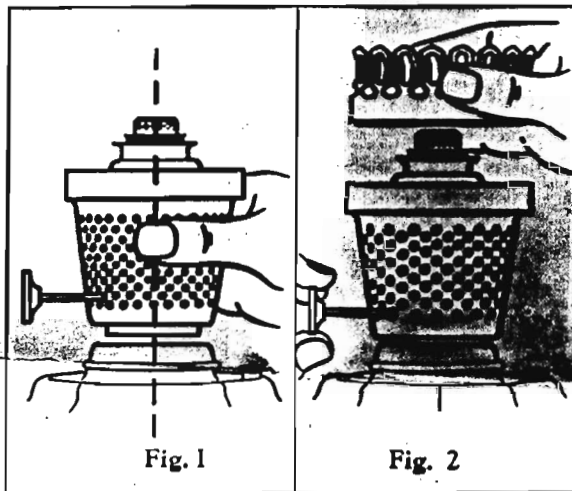
Caution: NEVER FILL THE LAMP WHILE IT IS BURNING.

TO ASSEMBLE CHIMNEY HOLDER

(See illustration No. 2)

Turn wick as low as possible, then place chimney holder on burner.

Caution: NEVER TURN WICK UP THROUGH AIR BAFFLE IN CHIMNEY HOLDER AS THIS WILL SERIOUSLY DAMAGE THE WICK.



TO ATTACH MANTLE

(See illustration No. 3)

Remove mantle carefully from its container. Touch wire frame only. Do not touch mantle fabric.

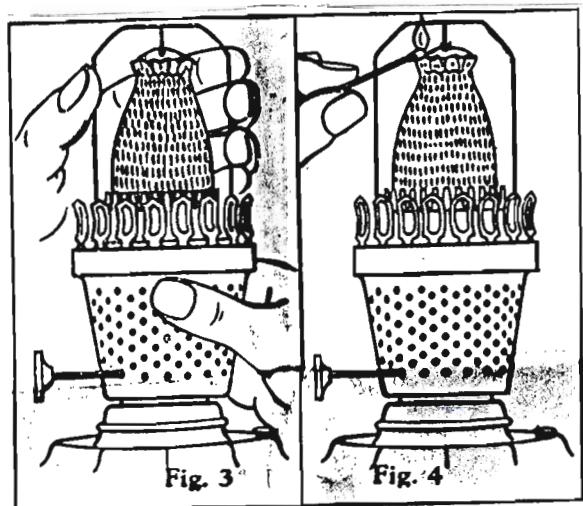
Place mantle holder over center tube of burner. Turn to right until it locks securely in place. Examine mantle to make certain it hangs straight over burner. If mantle is not straight, gently bend wire frame until straight.

TO BURN OFF MANTLE

(See illustration No. 4)

Burn the protective coating off the mantle by holding a lighted match to the top of the mantle. DO NOT ALLOW THE MATCH TO TOUCH THE MANTLE.

AFTER the mantle is burned off, fit glass chimney into the chimney holder pressing down as far as it will go.



TO LIGHT BURNER

(See illustration No. 5)

Before lighting the lamp the first time, be sure wick has soaked at least two hours. Remove the chimney holder complete with glass chimney and mantle. Adjust wick until it is slightly above the edge of the outer wick tube. Light wick with a match. After the flame has spread around the wick, replace the complete chimney holder, chimney, and mantle assembly. If the flame should go out when the chimney holder, chimney, and mantle are replaced, turn the wick slightly lower and light as before. The user will soon become accustomed to the correct position of the wick for proper lighting.

TO ADJUST LIGHT

Turn the wick up until mantle begins to glow. Do not adjust the wick to obtain a bright light until the burner is hot (burner will become hot in about five minutes).

When the burner is hot adjust the light to its full brightness. Do not turn the light so high that a yellow flame shows through the mantle.

A yellow flame will cause black carbon spots to form on the mantle. These carbon spots will quickly reduce the light, overheat the burner and damage it. If the slightest yellow flame shows through the mantle, it indicates the wick is turned too high and must be adjusted. The carbon spots will disappear from the mantle after turning down the wick. The user will soon become accustomed to the adjustment of the wick to get the maximum light without carbon spots forming on the mantle.

TO PUT OUT LIGHT

Turn the wick down as far as it will go and lightly blow across the top of the chimney in the same manner as with an ordinary kerosene lamp.



Fig. 5

CARE OF THE WICK

(a) The wick in this lamp has been chemically treated, properly trimmed and charred. It should never be turned up through the air baffle in the chimney holder as this will cause it to become frayed and uneven. (See illustration No. 6.) Should the wick become frayed or uneven before the burner is put into use, remove the flame spreader (part No. 34) from inner wick tube. Turn the wick up as far as it will go. Carefully dip the top of the wick in kerosene (see illustration No. 7). Then turn the wick down until it is even with the outer and inner wick tubes. Set the burner in the EMPTY fount. Apply lighted match to wick and allow it to burn until it goes out. (See illustration No. 8.) Then gently wipe, in a circular motion with finger, the top edge of the wick until it is smooth and even. DO NOT PRESS HARD WITH FINGER. Remove only the white ash that has formed on the top edge of the wick. (See illustration No. 9.)

(b) If the wick becomes damaged after the burner has been used, remove the burner from the fount and squeeze the excess kerosene out of the two flat ends of the wick (see illustration No. 10). Replace burner on EMPTY fount. Remove the flame spreader (part 34) from inner wick tube. Turn the wick down until it is even with the outer and inner wick tubes. Apply lighted match to wick and allow it to burn until it goes out. (See illustration No. 8.) Then gently wipe, in a circular motion with finger, the top edge of the wick until it is smooth and even. DO NOT PRESS HARD WITH FINGER. Remove only the white ash that has formed on the top edge of the wick. (See illustration No. 9.)

See illustrations Page 6.

TO CLEAN WICK

After many hours of burning, carbon will form on the wick, making the lamp hard to light and difficult to keep the light properly adjusted. To clean the wick remove the flame spreader (part 34) from the inner wick tube. Turn up the wick so that only the hard carbon deposit is above the wick tube. Cut the carbon from the top of the wick with a razor blade. (See illustration No. 11.)

Remove only the hard carbon deposit, being careful not to cut away all of the charred part of the wick. Before lighting the lamp the wick must be made perfectly smooth by gently wiping the top edge of it in a circular motion with the finger. If the wick is uneven and the lamp does not burn properly, it will be necessary to follow instruction (b) CARE OF WICK.

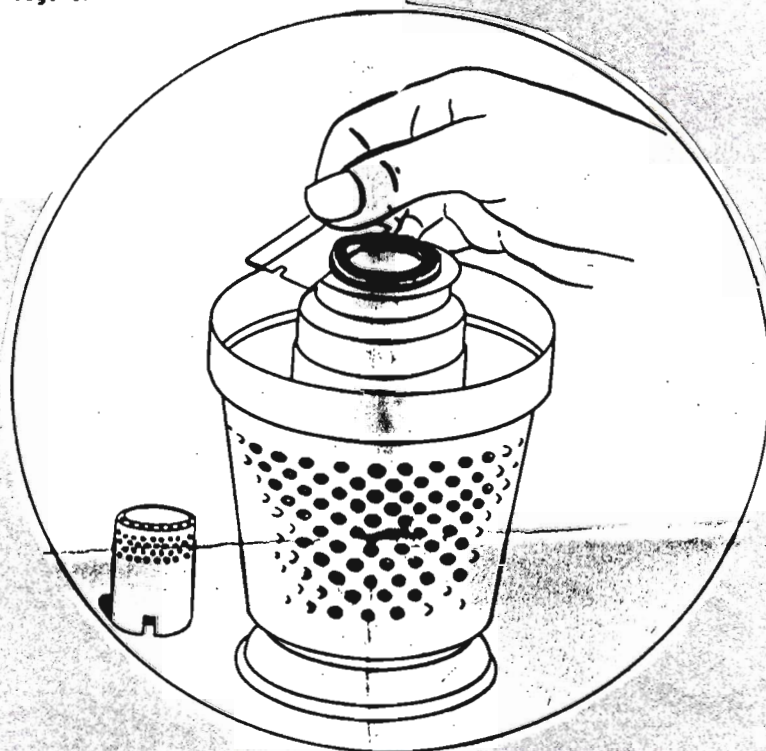


Fig. 11

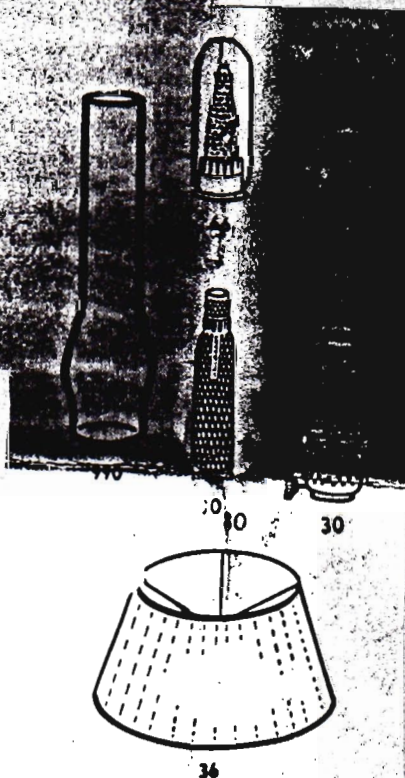
SUGGESTIONS FOR PROPER CARE OF THE LAMP

1. Do not damage the wick by turning it up through air baffle in chimney holder.
2. Always use clean, fresh kerosene (paraffin).
3. Make sure the flame spreader (part 34) is down in burner as far as it will go.
4. Keep lamp well filled with kerosene (paraffin) to prevent the wick from burning dry.
5. Always turn the light down when leaving the lamp for any length of time.
6. Never allow carbon spots to form on mantle. Keep light properly adjusted.
7. When lighting lamp, always allow burner to heat for five minutes before adjusting light to full brightness.
8. Lamp will not operate properly if placed in a draft.
9. The satisfactory operation of this lamp depends upon using the proper length of chimney. Therefore only a genuine Sun Flame Chimney should be used.

ALWAYS USE GENUINE SUN FLAME PARTS, MANTLES AND CHIMNEYS

NO. 300 LAMP PARTS LIST

- No. 30—Burner (less wick, chimney holder, air baffle and flame spreader).
- No. 31—Chimney Holder
- No. 32—Air Baffle
- No. 34—Flame Spreader
- No. 35—Outer Wick Tube
- No. 36—Parchment Shade (16")
- No. 66—Mantle for No. 300 Lamp
- No. 75—Burner Complete with wick, chimney holder, air baffle and flame spreader
- No. 80—Wick Complete
- No. 990—Heat Resisting Glass Chimney



See directions Page 5.

Véanse las instrucciones en la página 5



Fig. 6

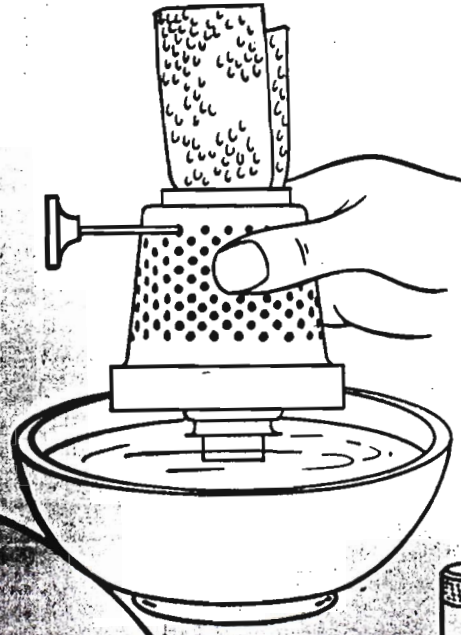


Fig. 7

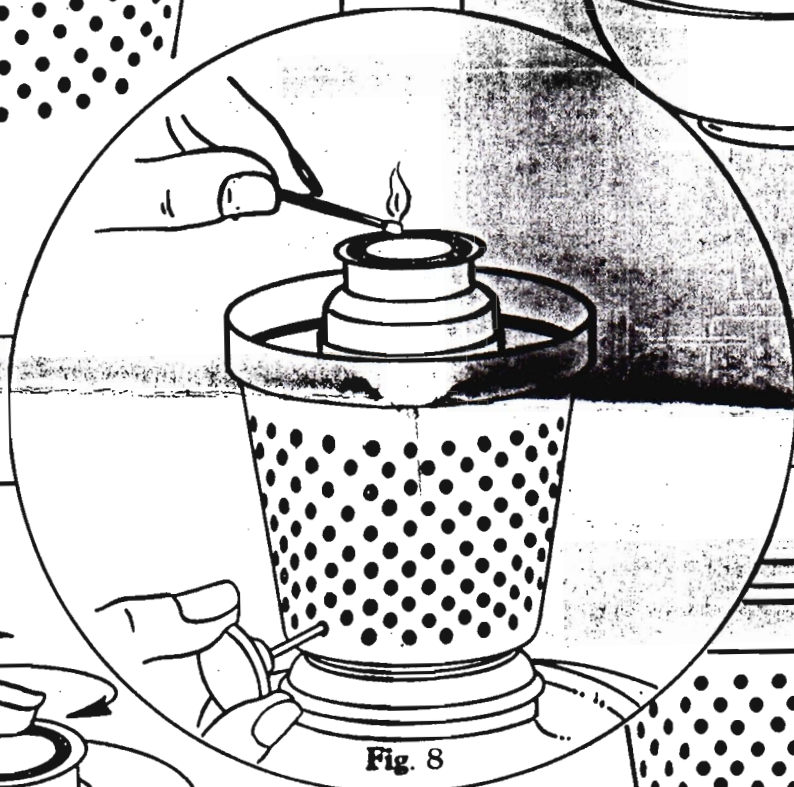


Fig. 8



Fig. 9

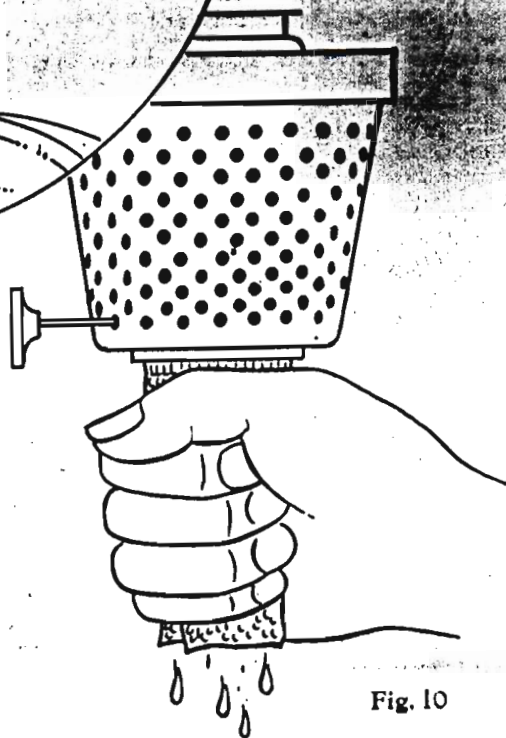


Fig. 10

Voir les instructions à la page 5

Veja as instruções na página 5